

Smart decisions. Lasting value.

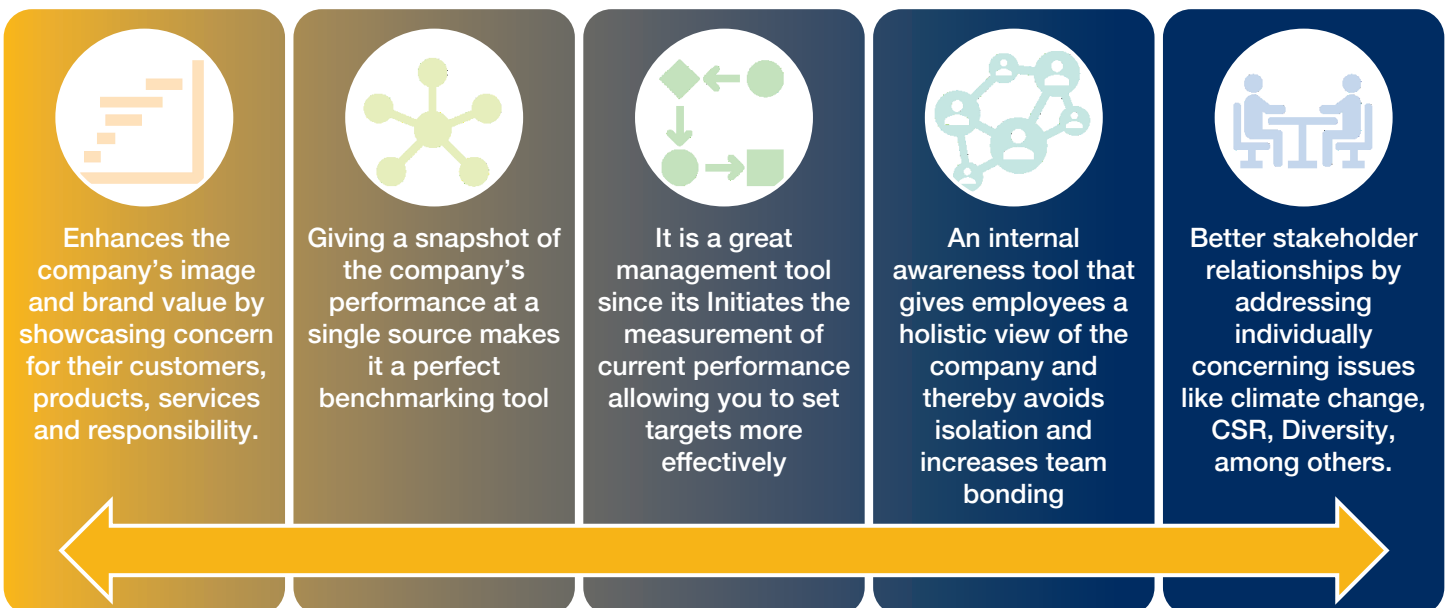
Global Sustainability Services

“ Its Time To Rethink About Our Commitment Towards Society & Choose Responsible Management Tools ”

In the current age of hyper transparency sustainability initiatives have become the short- and long-term value creation tool. Resource scarcity, climate change, regulatory pressure and stakeholder influence are the reality posed by the current context. As a result, the number of companies looking to make their operations more efficient and contribute to the sustainable development of their economic environments is increasing. Sustainability and Integrated reporting are excellent ways for communicating sustainability performance and impacts to stakeholders.

By releasing a sustainability report, your organization showcases publicly how well it is responding to sustainability issues in our community, including issues related to the environment, economy or society.

While such non-financial statement allow organizations, to affirm their mission and pursued value, these reports also bring about a host of benefits for them:



In totality the report gives your organization a competitive edge by letting everyone know that you are an organization that cares. At the center of excellence in sustainability, Crowe has developed specific experience and knowledge on climate change, cultural integration, corporate social responsibility and integrated reporting in different industries.

- Sustainability Strategy
- Sustainability Reporting & Assurance
- Compliance, Audits & Frameworks

Sustainability Strategy

Integrating key sustainable strategies into your business model is the right step towards hyper transparency. At its core, our strategy will naturalize sustainability initiatives and embed them deep within the roots of your organization.

- Development of sustainable framework & Data mapping
- KRA and KPI Generation
- Institutionalizing – Integration in to vision and mission

Sustainability & integrated Reporting

Sustainability reporting has thoroughly arrived in the UAE, and it is a highly sought-after source of information for every affiliated stakeholder. Crowe UAE can help you formulate your content in an aesthetic and reliable manner in accordance with the standard of choice

- GRI standard: Core or comprehensive option
- IIRC - Integrated reporting & SASB

Assurance Statements

As sustainability disclosures are made public, in many cases embedded in the annual report, organizations must ensure that their corporate reporting is complete, accurate and relevant. Crowe Assurance can give your reports the backing they need through an independent assessment and opinion:

- ISAE 3000 – SOC1 & SOC2 assessments
- AA1000AS

Carbon Accounting & Net zero targets

Disclosure of non-financial information about your organization carbon output (GHG) and efficiency among other aspects are a real testimony of your organization's commitment to sustainable initiatives. Crowe can help put your organization on a feasible decarbonization route through a balanced portfolio (Reduction / elimination / offsetting)

Compliance analysis

Crowe can analyze the readiness of your organization to meet the requirements of various initiatives that are at the forefront of ESG practices:

- Carbon Disclosure Project (CDP) Fit
- Corporate Sustainability Assessment (S&P Global) Fit

CSR & Cultural Framework CSR Audit

Crowe's well experienced sustainability strategists possess the right tools and experience to develop and implement the various CSR functions and culture framework processes including managing the change it brings about

Crowe can help your organization assess their performance against corporate social responsibility objectives as set out in the frameworks

Contact us:



Varghese Kallukaran,
Senior Manager ESG
+971 555 11 3135
Varghese.kallukaran@crowe.ae



Luis Piacenza,
Partner Sustainability Services
Tel. + 34 932 183 666
luis.piacenza@crowe.es



Binit Shah,
Partner Assurance & Advisory
+971 52 212 9830
Binit.shah@crowe.ae